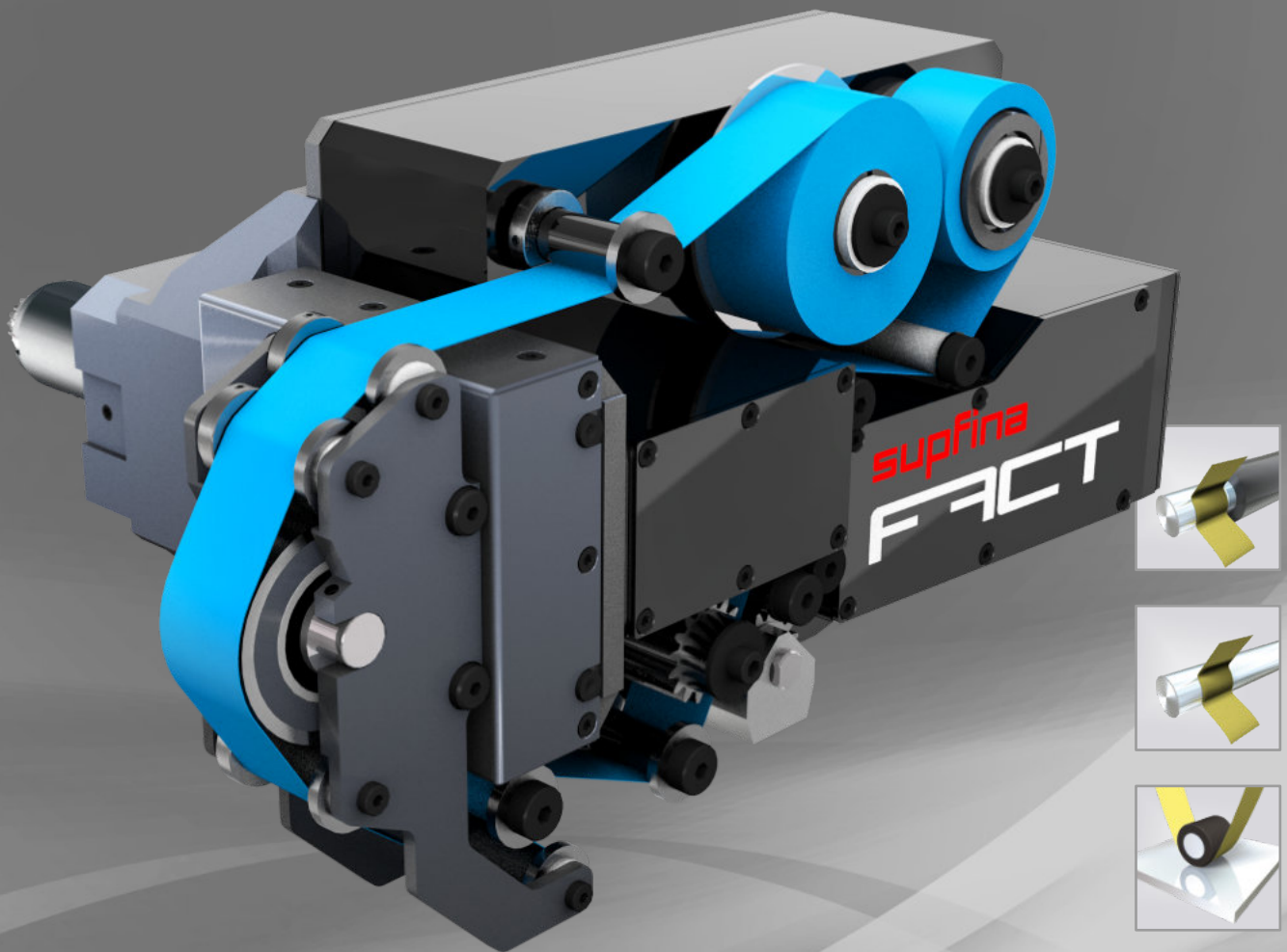
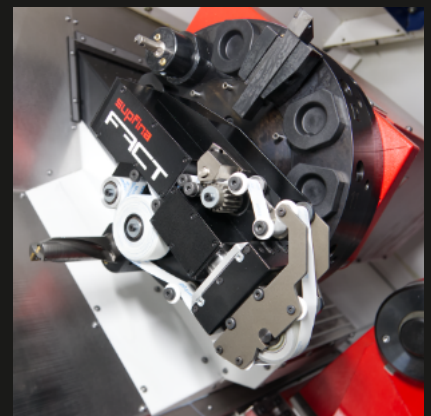


supfina



With its small, compact design, the Supfina Fact (Fast Action Changing Tool) tape finishing attachment is ideal for use in revolver lathes. In addition, the surface qualities that can be achieved are much higher than those achieved with standard turning. This means that even the highest surface requirements of your customers will be fulfilled.

Superfinishing attachment
FACT



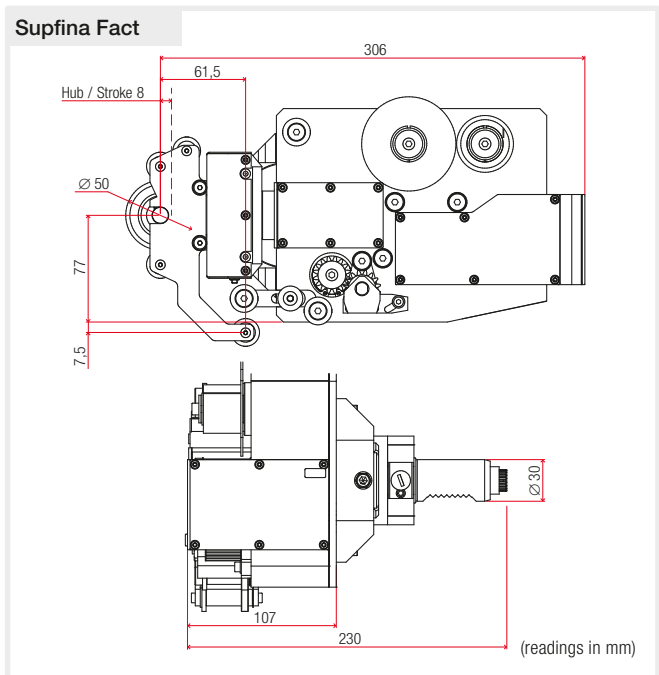
Superfinishing attachment Fact

supfina

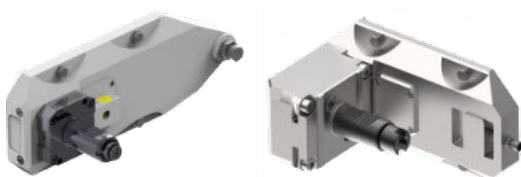
Due to the quick and easy mounting on existing lathes and the process support that Supfina has, you can get started immediately. So you increase your competitiveness and meet all customer requirements.

- Small compact design for mounting on the revolver of lathes
- Drive for the oscillation and the tape feed via a central drive from the revolver of the lathe
- Flushing through the revolver to the pressure roller
- No additional media connections are required
- Adaptation to different turret systems possible
- Oscillation shutdown for twist-free machining through our special gear is possible

Technical data	Supfina Fact
Spring contact force	50 – 150 N
Oscillation frequency	up to approx. 25 Hz
Tape width	max. 25 mm
Tape length, depending on grit	max. 35 m
Weight approx.	11 kg



Accessories



Revolver adapters are available in different versions



Supfina **guarantees** you independent consulting, which, in addition to the selection of the Superfinishing tool, includes all factors influencing the production.



Pressure rollers with a Shore hardness of 35°, 50°, 65° or 80° and with one-sided bearings can be delivered.

Engineering with High Precision

www.supfina.com

Supfina Grieshaber GmbH & Co. KG
 Schmelzegrün 7 · 77709 Wolfach / Germany
 Phone +49 7834 866-0 · Fax +49 7834 866-200
info@supfina.com